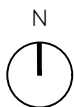
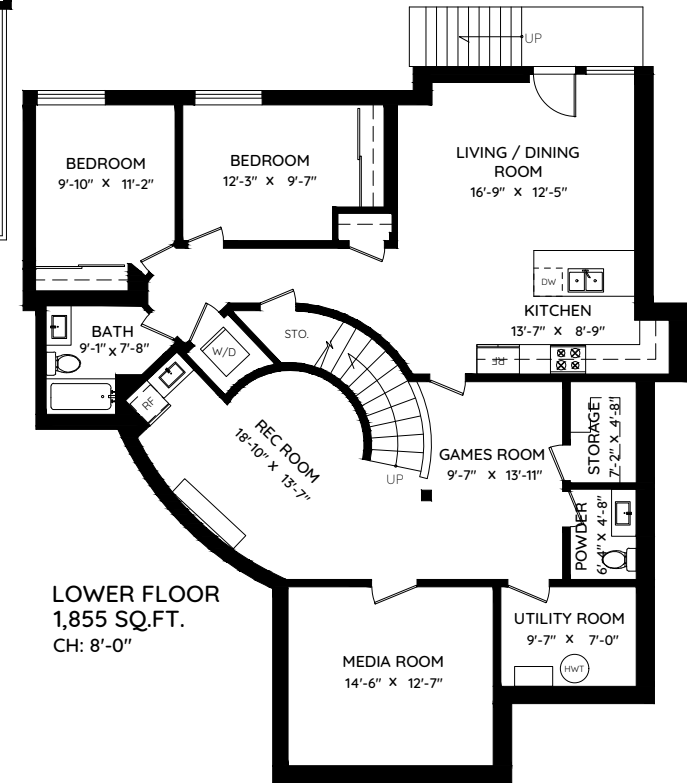
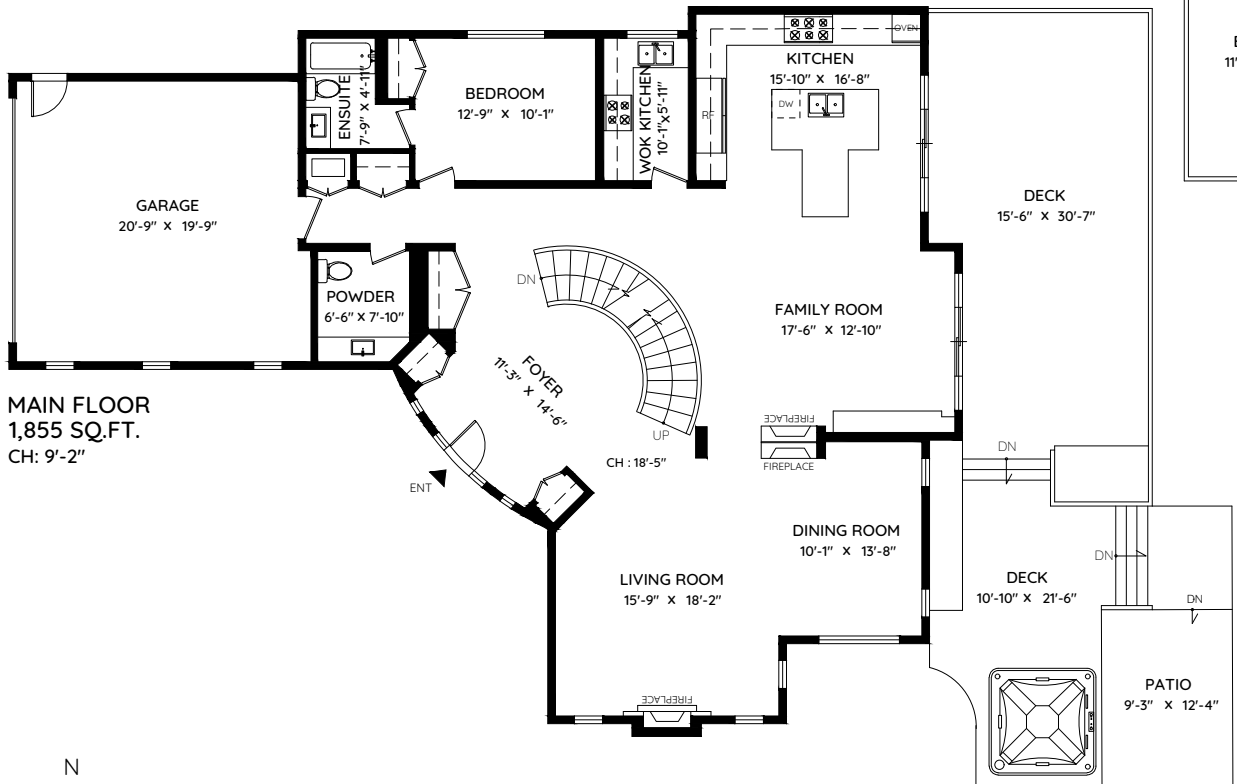
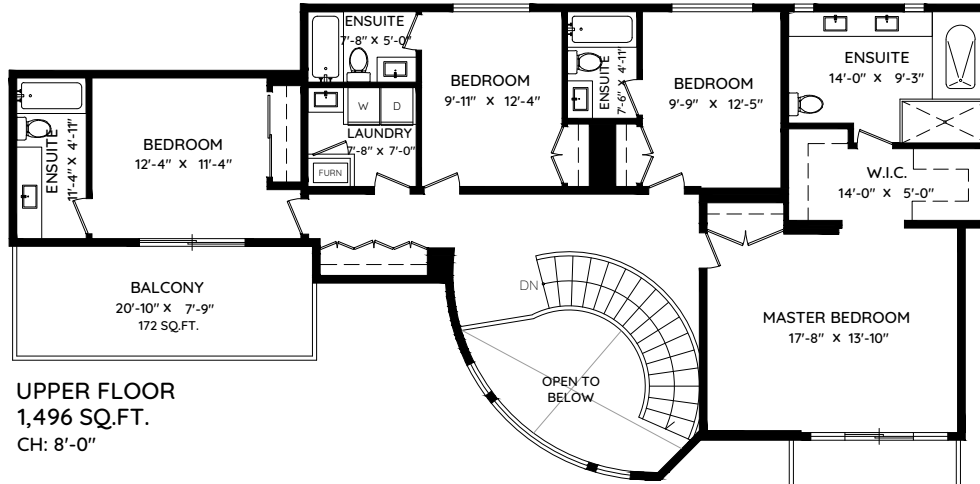


495 GORDON AVENUE

WEST VANCOUVER, BC

| | |
|--------------|---------------------|
| MAIN | 1,855 SQ.FT. |
| UPPER | 1,496 SQ.FT. |
| LOWER | 1,855 SQ.FT. |
| TOTAL | 5,206 SQ.FT. |
| GARAGE | 433 SQ.FT. |
| BALCONY | 369 SQ.FT. |
| DECK | 803 SQ.FT. |
| PATIO | 114 SQ.FT. |
| TOTAL | 1,719 SQ.FT. |



The floor plan and the measurements are approximate within +/- 2% and are to be used for advertising usage only. The sqft was provided from architectural floor plan. May include unfinished area. Not suitable for architectural or construction. E&O Insured